

Itekube Touchconverter user manual

Installation:

- Download the file and unzip in the directory of your choice
- Launch “converter.exe” (the program closes automatically when you leave Navisworks)

Once in Navisworks (Freedom/Manage/Simulate):

To activate “Walk” mode at any time => 5-finger tap or touch the “Walk” icon in the panel

To activate regular cursor mode => 1-finger tap

To activate Pan mode => touch the “Pan” icon in the panel



In Standard or Pan Mode :

Standard gestures:

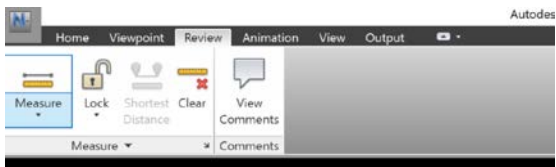
Orbiting	=>	1-finger pan
Pan	=>	2-finger pan
Right Click	=>	1-finger press
Scale	=>	2-finger pinch
Visualization	=>	3-finger pan (must be activated in the menu)
Select	=>	1-finger tap
HomeView	=>	2-finger tap
SelectionView	=>	3-finger tap
Standard Mode	=>	4-finger tap
SetOrbit	=>	5-finger Pan
Walk Mode	=>	5-finger tap

In Walk Mode

1-finger up/down left/right same as mouse!

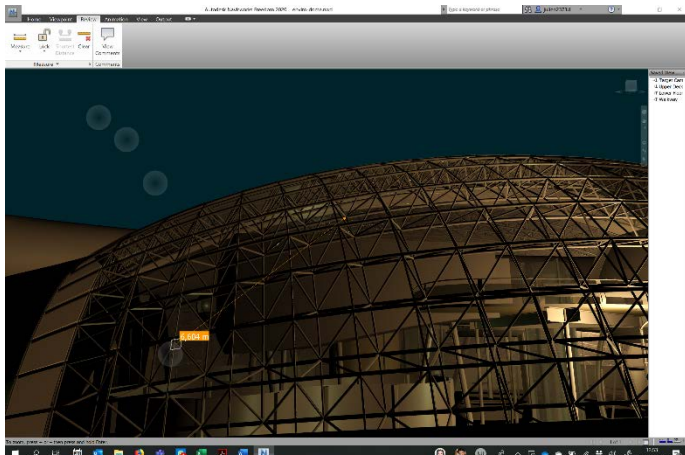
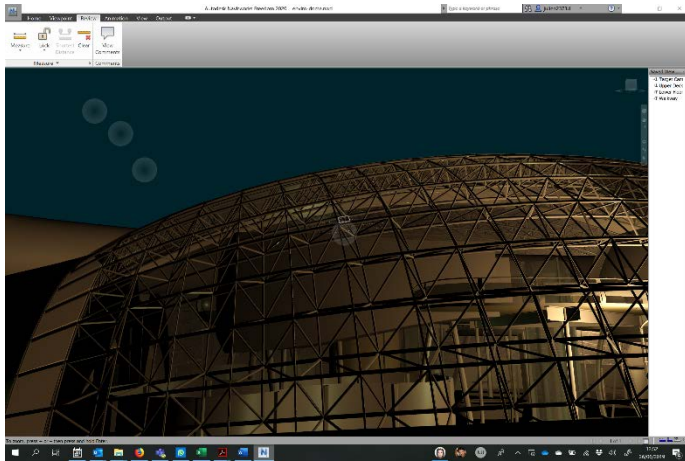
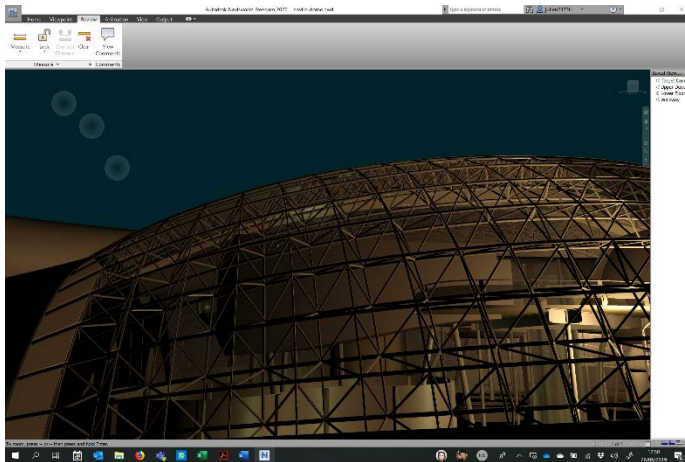
Measuring gestures:

Activate Measure mode in the Review panel



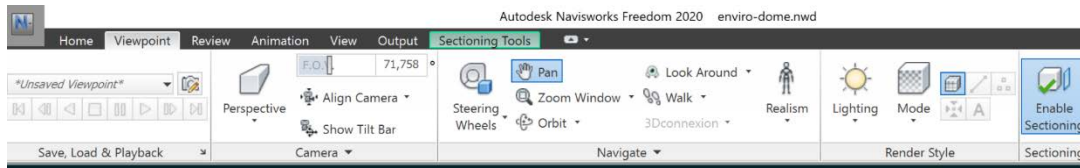
Start measuring =>

1. Keep 3-finger touch anywhere on the screen in the Navisworks window
2. Slide 1 finger to the desired starting point (with the little white square) then lift to select
3. Slide 1 finger to the end point then lift to select



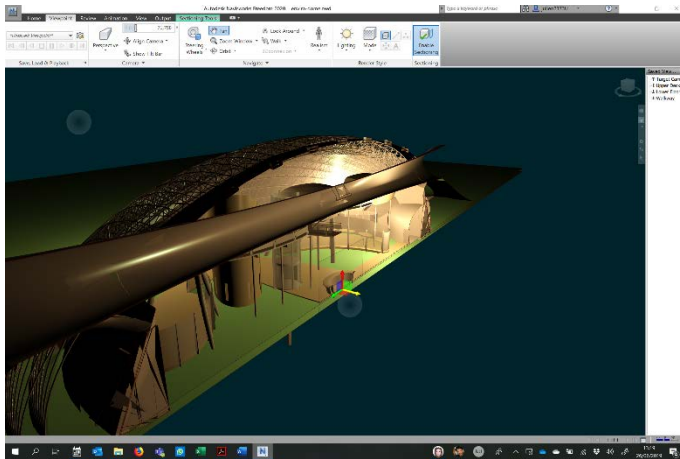
Sectioning gestures:

Activate Sectioning mode in the Viewpoint panel (make sure Pan mode is still active)



Start Sectioning =>

1. Keep 1-finger touch anywhere on the screen in the Navisworks window
2. 1-finger slide over gizmo until arrow or plane turns yellow to select sectioning plan or direction



3. Keep 2-finger touch anywhere on the screen in the window (no need to lift previous finger)
4. Move 1 finger along the direction of the selected arrow or plane to section

